



PETROVIETNAM POWER CORPORATION
PETROVIETNAM POWER COAL IMPORT AND SUPPLY COMPANY
DAILY NEWS

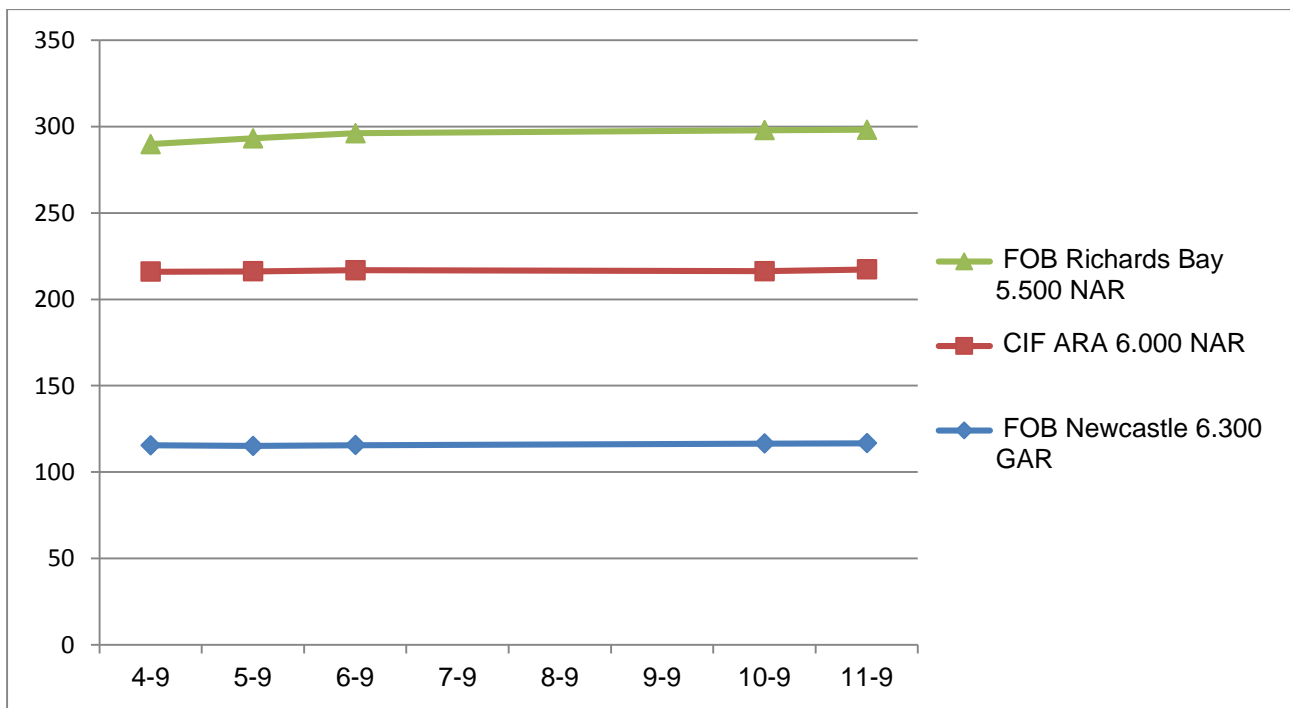
Date 13/09/2018

INTERNATIONAL COAL PRICE ASSESSMENTS

Daily prompt physical thermal coal assessments	Window 7 – 45 day	+/-	Window 90 - day	+/-
FOB Newcastle 6,300 GAR	116.70	+0.20	N/A	N/A
CIF ARA 6,000 NAR	100.55	+0.80	N/A	N/A
FOB Richards Bay 5,500 NAR	80.85	-0.75	N/A	N/A
FOB Kalimantan 5,900 GAR	N/A	N/A	73.25	-0.75
FOB Kalimantan 5,000 GAR	N/A	N/A	52.00	+0.00

China Coal Assessment	USD/tons	+/-	NDT/tons	+/-
PCC6 (CFR South China 3,800 NAR)	47.00	+0.00	372.87	+0.10
PCC7 (CFR South China 4,700 NAR)	60.25	+0.20	477.99	+1.72
PCC8 (CFR South China 5,500 NAR)	76.50	+0.00	606.91	+0.17

DAILY PROMPT PHYSICAL THERMAL COAL ASSESSMENTS IN 2018



(Source: Platts Coal Trader International – Date 11/09/2018)

NEWS

Ukrainian coal imports up 26% to 14.2 million mt in Jan-Aug

Ukrainian coal imports including anthracite rose 26% on the year to 14.16 million mt in January-August from 11.22 million mt in the same period of 2017, the state fiscal service reported Monday. If measured by value, imports of coal increased by 17% to \$1.98 billion, compared with \$1.69 billion worth of imports in January-August 2017, according to the fiscal service. Most of the coal imports — some 62.7% — came from Russia, but also from the US (30.4%) and Canada (4.4%), according to the service. In August Ukraine imported 1.27 million mt of coal, including anthracite, down from 1.76 million mt in August 2017 and down from 1.81 million mt in July. The coal imports increased along with growing demand from thermal power plants and heat producers amid a decline in domestic extraction.

Ukraine produced 22.07 million mt of coal in January-August, down 6.5% year-on-year, according to the energy and coal industry ministry. The country's coal-burning power plants and heat producers increased consumption of coal by 17% on the year to 15.2 million mt in January-July, compared with 12.94 million mt consumed a year ago. In July alone consumption of coal increased by 6.3% on the year to 2.16 million mt, according to the ministry. Ukraine needs to accumulate 2.6 million mt of coal in stocks by November 1 for the upcoming winter. Ukraine had about 1.9 million mt of coal in stocks as of September 4.

China's August coal imports up 13.5% on year

China imported 2.868 million mt of coal in August, up 13.5% year on year, according to preliminary figures released by China's General Administration of Customs over the weekend. In the first eight months of 2018, China imported a total of 203.818 million mt of coal, up 14.7% year on year. By comparison, China exported 486,000 mt of coal in August, up by 426,000 mt year on year. In the first eight months of 2018, China exported a total of 3.275 million mt of coal, down 43.8% year on year.

CIL sets 652MT production target, to close 53 underground mines

Giving a fillip to the government's target to supply more coal to the power sector, Coal India has taken an aspirational production target of 652 million tonne for 2018-19 against an initial target of 630 million tonne for the year. Supply to the power sector has been set at 525 million tonne for this fiscal as against 454 million tonne supplied in 2017-18, CIL marketing director S N Prasad said Wednesday. "We have taken an aspirational production target of 652 million tonne during the year and offtake of 680 million," company Chairman A K Jha said. Jha said the power demand was growing exponentially and Coal India was not in position to keep pace with that in the monsoon months of August and September.

As production targets had been revised upwards, a rare in CIL's history, the world's largest miner continues to close down underground mines on the grounds of safety and economic viability. This year, 53 underground mines would be closed and in the last financial year, a total 43 UG mines were shut down, Jha said on the sidelines of the company's 44th AGM here. Speaking further about rationalisation of UG mines, he said the Indian School of Mines has been entrusted to prepare a report within the next six months to help the miner bring small mines to a manageable level by closure or amalgamation. During nationalisation in the 1970s, some 700 UG mines was brought under CIL most of which were small with high manpower. Ninety five per cent of its total coal production is from the 177 open cast mines, out of the company's total 369 mines. Fifty to 60 per cent of total coal production of CIL is extracted from 26 crucial mega mines. Prasad said CIL was working towards higher supplies to both power and non-power sector and was committed to reduce coal import which hovers around 200 million tonne per annum.

(Source: Platts)

INTERNATIONAL SPOT DRY BULK FREIGHT ASSESSMENTS

				<i>Unit: USD/ton</i>
Size	From	To	Freight rates	Change
Capesize	Australia	China	9.20	-1.05
(150,000 tons)	Queensland	Japan	10.50	-1.35
	New South Wales	South Korea	11.35	-1.35
Panamax	Richards Bay	India West	14.20	+0.00
(70,000 tons)	Kalimantan	India West	9.95	+0.10
	Richards Bay	India East	14.40	+0.00
	Kalimantan	India East	8.40	+0.10
	Australia	China	13.40	+0.10
	Australia	India	15.20	+0.20

(Source: Platts Coal Trader International – Date 11/09/2018)