



**PETROVIETNAM POWER CORPORATION**  
**PETROVIETNAM POWER COAL IMPORT AND SUPPLY COMPANY**  
**DAILY NEWS**

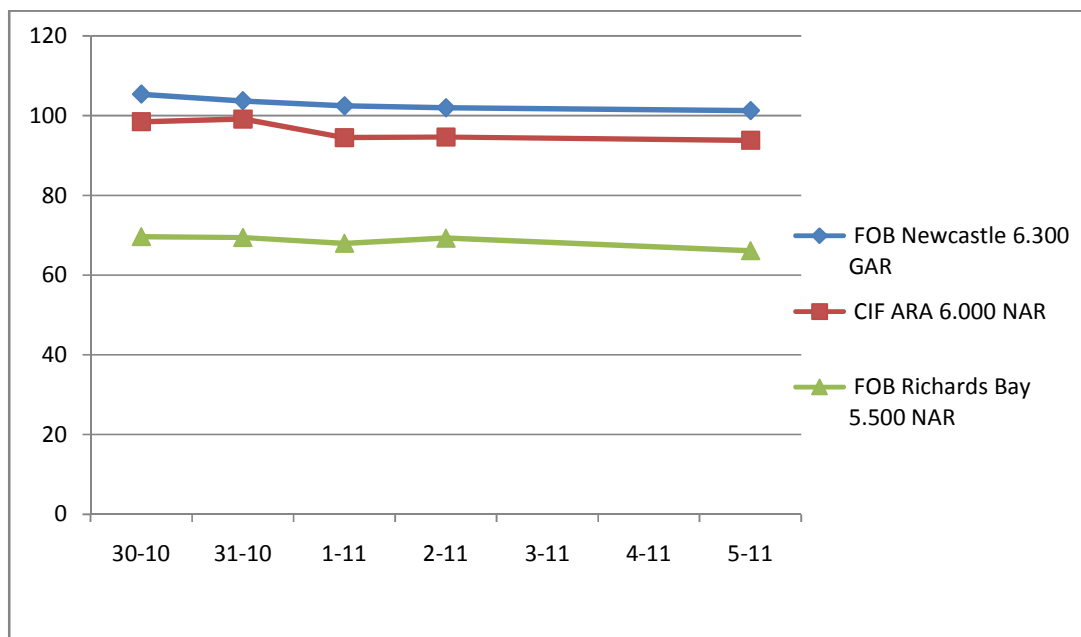
Date 12/11/2018

**INTERNATIONAL COAL PRICE ASSESSMENTS**

Daily prompt physical thermal coal assessments	Window 7 – 45 day	+/-	Window 90 - day	+/-
FOB Newcastle 6,300 GAR	101.30	-0.70	N/A	N/A
CIF ARA 6,000 NAR	93.80	-0.80	N/A	N/A
FOB Richards Bay 5,500 NAR	66.10	-3.15	N/A	N/A
FOB Kalimantan 5,900 GAR	N/A	N/A	71.95	+0.00
FOB Kalimantan 5,000 GAR	N/A	N/A	51.50	+0.00

China Coal Assessment	USD/tons	+/-	NDT/tons	+/-
PCC6 (CFR South China 3,800 NAR)	43.90	+0.15	302.98	+2.54
PCC7 (CFR South China 4,700 NAR)	59.75	+0.00	412.36	+2.05
PCC8 (CFR South China 5,500 NAR)	76.50	-1.00	527.96	+2.62

**DAILY PROMPT PHYSICAL THERMAL COAL ASSESSMENTS IN 2018**



*(Source: Platts Coal Trader International –Date 5/11/2018)*

## **NEWS**

### **Coal exports from Australia's Gladstone port hit 22-month high in Oct**

Coal shipments from the Port of Gladstone in Australia rose to a 22-month high in October on a strong lift in exports bound for India and South Korea, data released by the Gladstone Ports Corporation on Tuesday showed. A total of 6.69 million mt of coal was shipped from the Queensland port in October, up 10% year on year and 16% from September, the data showed. About 70% of the coal handled at Gladstone is metallurgical coal, GPC said. Over January-October, the port shipped out 55.68 million mt of coal, which means an annualized rate of 66.85 million mt. If Gladstone's coal exports remain at this rate for the rest of the year, however, it will be the lowest volume of exports since 2013 when they stood at 62.74 million mt. Exports peaked in 2015 at 72.09 million mt, the data showed.

Last month, the Department of Industry, Innovation and Science forecast Australia's total metallurgical coal exports at 180 million mt, up from 173 million mt in 2017. Gladstone's coal exports were considerably weak in the first four months of the year amid some rail issues. Meanwhile, shipments to India from Gladstone surged to 1.77 million mt in October, up 70% year on year and 7% month on month, GPC data showed. India is forecast to be a key importer of metallurgical coal as its domestic steel sector expands, but Australia has experienced some loss in market share, the Department of Industry, Innovation and Science said last month. "Australia's share of India's metallurgical coal imports has declined from around 90% in the March quarter of 2017 (just before Cyclone Debbie) to 75% in the June quarter of 2018. India's steel mills have increasingly turned to the United States and Canada as an alternative source of supply, as a result of high prices and disruptions to Australian supply, particularly after Cyclone Debbie in 2017," it said.

Exports to South Korea stood at 1.24 million mt in the month, down 56% from a year earlier but up 68% from September, GPC said. South Korea's total metallurgical coal imports are expected to be steady this year at 36 million mt, the department said. The largest recipient of coal exported from the port of Gladstone was Japan at 1.75 million mt, down 17% year on year and steady from 1.74 million mt in September, GPC data showed. Exports to China were 973,000 mt in October, down 20% from a year earlier but up 21% from September. Shipments to Taiwan at 177,000 mt were up 26% year on year but 33% month on month. Other recipients of coal shipped out from Gladstone port in October included Brazil (233,000 mt), the Netherlands (225,000 mt), Switzerland (75,000 mt), and Vietnam (156,000 mt). About 101,000 mt was due to end up back in Australia, according to GPC data.

### **Taiwan to promote coal-fired power generation in medium, long term**

Coal-fired power generation in Taiwan will remain key to the county's economic plans, promoting the use of ultra-supercritical technology to reduce emissions, the Ministry of Economic Affairs said Thursday. "In the medium and long term, the Ministry of Economic Affairs has accelerated the promotion of coal-fired power plants, and requires the development of new or expanded power plants to adopt the best available technology," the ministry said. Taiwan currently has 18.6 GW of installed coal-fired capacity, with an additional 4 GW planned and under construction, according to S&P Global Platts' plant capacity database.

Poor air quality in western Taiwan recently had seen coal-fired power generation come under increased scrutiny. However, the Ministry said power plants only accounted for 4.5%-9.9% of pollution and short-term load reduction and emission reducing operations had seen power plants help reduce sulfur and nitrogen oxide emissions. High-efficiency coal plants consume higher-quality thermal coal, and Taiwan sources its coal primarily from Australia, Indonesian and Russia. This sustained demand for high-CV coal is seen by market sources as bullish for coal as most key global pricing points are on a 6,000 kcal/kg NAR basis, similar to the specifications of coal consumed by Taiwan. Taiwan had imported 45.71 million mt of thermal coal from January-August, according to customs data. Of this, 50% was Australian, 25% was Indonesian, 16% was Russian, while the remainder was split between South Africa, the US and Colombia.

*(Source: [www.platts.com](http://www.platts.com))*

## **INTERNATIONAL SPOT DRY BULK FREIGHT ASSESSMENTS**

				<i>Unit: USD/ton</i>
<b>Size</b>	<b>From</b>	<b>To</b>	<b>Freight rates</b>	<b>Change</b>
<b>Capesize</b> (150.000 tons)	Australia	China	10.25	-0.35
	Queensland	Japan	11.85	-0.35
	New South Wales	South Korea	12.70	-0.35
<b>Panamax</b> (70.000 tons)	Richards Bay	India West	14.45	+0.45
	Kalimantan	India West	10.00	+0.00
	Richards Bay	India East	14.70	+0.45
	Kalimantan	India East	8.35	+0.00
	Australia	China	13.50	-0.10
	Australia	India	15.20	-0.10

*(Source: Platts Coal Trader International –Date5/11/2018)*