



**PETROVIETNAM POWER CORPORATION**  
**PETROVIETNAM POWER COAL IMPORT AND SUPPLY COMPANY**  
**DAILY NEWS**

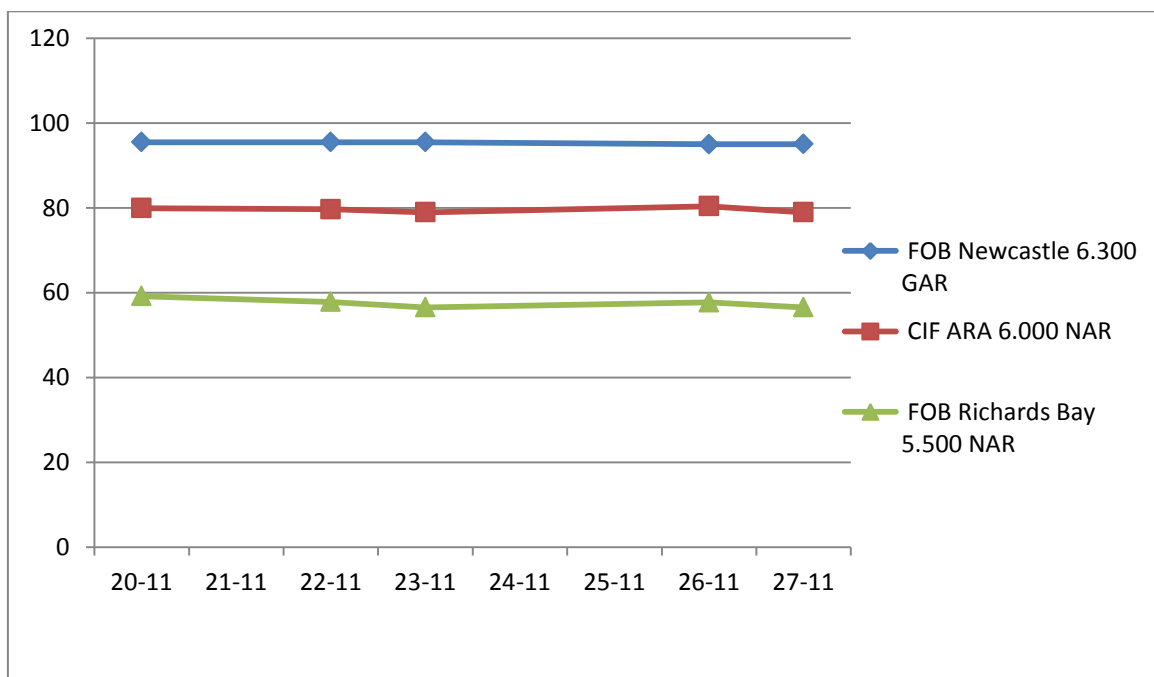
Date 17/12/2018

**INTERNATIONAL COAL PRICE ASSESSMENTS**

Daily prompt physical thermal coal assessments	Window 7 – 45 day	+/-	Window 90 - day	+/-
FOB Newcastle 6,300 GAR	95.65	+0.65	N/A	N/A
CIF ARA 6,000 NAR	82.15	+1.75	N/A	N/A
FOB Richards Bay 5,500 NAR	60.25	+2.55	N/A	N/A
FOB Kalimantan 5,900 GAR	N/A	N/A	67.75	-0.25
FOB Kalimantan 5,000 GAR	N/A	N/A	47.00	-0.30

China Coal Assessment	USD/tons	+/-	NDT/tons	+/-
PCC6 (CFR South China 3,800 NAR)	35.50	-0.50	245.73	-3.03
PCC7 (CFR South China 4,700 NAR)	54.00	-0.50	373.78	-2.81
PCC8 (CFR South China 5,500 NAR)	69.00	-0.20	477.61	-0.56

**DAILY PROMPT PHYSICAL THERMAL COAL ASSESSMENTS IN 2018**



*(Source: Platts Coal Trader International – Date 27/11/2018)*

## **NEWS**

### **Thermal coal stockpiles at Indian power plants rise to 14.6 mil mt**

Thermal coal stockpiles at Indian power stations rose to 14.6 million mt in the week to Wednesday, a gain of 6% week on week and up 18.5% year on year, according to data published Friday by the Central Electricity Authority. This was also the highest volume since September 9 when stocks were 14.69 million mt. Stockpiles were enough to cover nine days' worth of generation, which was unchanged from December 5, while the number of plants holding critical or super-critical volumes fell to 14, from 22 the week before. Stockpiles of imported thermal coal grew to 564,000 mt, up 3.4% week on week and 134,000 mt greater than the year-to-date average of 430,000 mt.

### **China's raw coal output remains stable in November**

China's output of raw coal showed stable growth in November, up 4.5 percent year-on-year to 320 million tonnes. The growth narrowed from the 8-percent gain year-on-year in October, while the daily average output reached 10.51 million tonnes, the highest level since December 2015, according to the National Bureau of Statistics (NBS). In the first 11 months, China's coal output climbed 5.4 percent year-on-year to 3.21 billion tonnes. China saw a 13.1-percent decrease in coal imports year-on-year last month, compared with an 8.5-percent growth in October.

The coal data was released with other energy indicators. China's crude oil imports saw a sharp increase in November compared with a month earlier, rising by 3.99 million tonnes. Crude oil output dipped 1.3 percent year-on-year to 15.53 million tonnes in November. China accelerated the production of natural gas in a bid to ensure the natural gas supply for heating in winter. Natural gas output jumped 10.1 percent year-on-year to 14.3 billion cubic meters in November, accelerating from the 7.5-percent gain registered in October. On a monthly basis, the daily average output of natural gas rose by 0.5 cubic meters to hit a record high of 480 million cubic meters. China's natural gas imports stood at 9.15 million tonnes last month, the highest level since November 2017, with an increase of 39.8 percent year on year.

(Source: [www.xinhuanet.com](http://www.xinhuanet.com))

### **Coal mine accident in southwestern China kills seven**

A coal mine accident in China's southwestern city of Chongqing killed seven workers and injured three, state-owned Xinhua news agency reported on Sunday. The workers at the Fengchun coal mine under the Chongqing Energy Group were killed in an underground transport accident on Saturday afternoon, Xinhua reported. The group has suspended operations at all of its coal mines, state television reported. China's coal mine safety watchdog launched inspections of mines across the country from October to June to improve safety conditions. The move followed an accident at a coal mine in Shandong province in October that killed eight people, prompting authorities to order 41 coal mines there to halt production for security checks.

(Source: [www.reuters.com](http://www.reuters.com))

## **INTERNATIONAL SPOT DRY BULK FREIGHT ASSESSMENTS**

Size	From	To	Freight rates	Change
<b>Capesize</b> (150.000 tons)	Australia	China	10.35	+0.75
	Queensland	Japan	11.90	+0.90
	New South Wales	South Korea	12.75	+0.90
<b>Panamax</b> (70.000 tons)	Richards Bay	India West	12.75	-0.05
	Kalimantan	India West	8.50	+0.15
	Richards Bay	India East	12.95	-0.05
	Kalimantan	India East	7.05	+0.15
	Australia	China	12.10	+0.55
	Australia	India	13.60	+0.55

(Source: *Platts Coal Trader International – Date 27/11/2018*)