



PETROVIETNAM POWER CORPORATION
PETROVIETNAM POWER COAL IMPORT AND SUPPLY COMPANY
DAILY NEWS

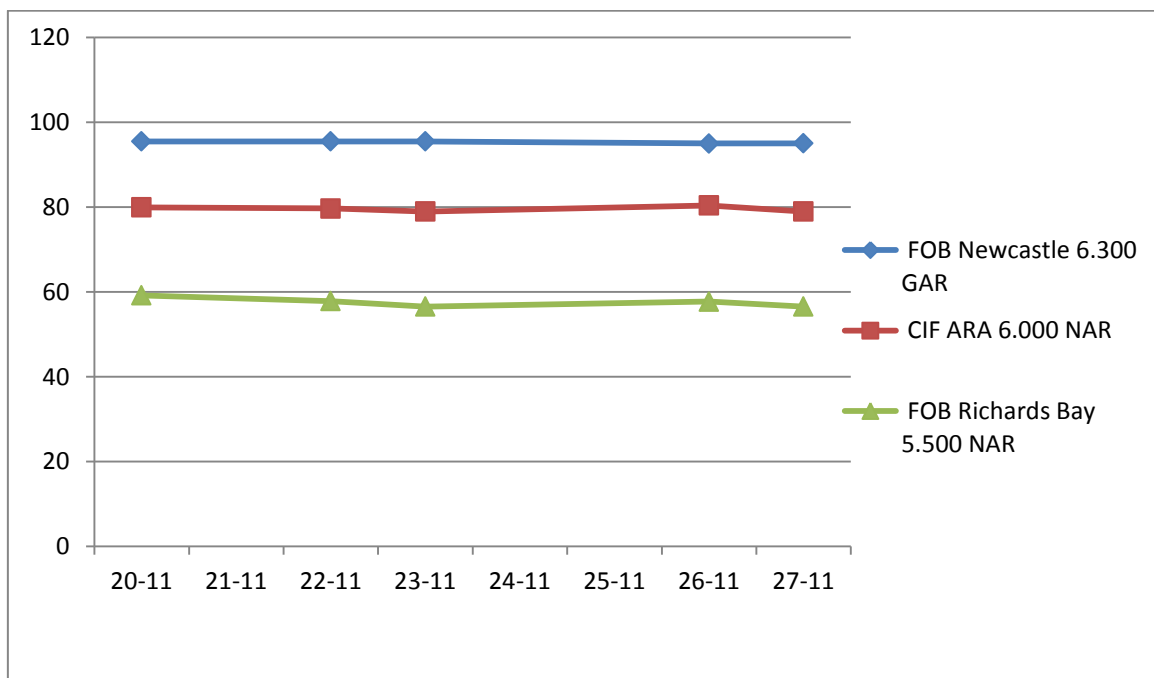
Date 29/11/2018

INTERNATIONAL COAL PRICE ASSESSMENTS

Daily prompt physical thermal coal assessments	Window 7 – 45 day	+/-	Window 90 - day	+/-
FOB Newcastle 6,300 GAR	95.65	+0.65	N/A	N/A
CIF ARA 6,000 NAR	82.15	+1.75	N/A	N/A
FOB Richards Bay 5,500 NAR	60.25	+2.55	N/A	N/A
FOB Kalimantan 5,900 GAR	N/A	N/A	67.75	-0.25
FOB Kalimantan 5,000 GAR	N/A	N/A	47.00	-0.30

China Coal Assessment	USD/tons	+/-	NDT/tons	+/-
PCC6 (CFR South China 3,800 NAR)	35.50	-0.50	245.73	-3.03
PCC7 (CFR South China 4,700 NAR)	54.00	-0.50	373.78	-2.81
PCC8 (CFR South China 5,500 NAR)	69.00	-0.20	477.61	-0.56

DAILY PROMPT PHYSICAL THERMAL COAL ASSESSMENTS IN 2018



(Source: Platts Coal Trader International – Date 27/11/2018)

NEWS

Thailand Oct coal imports surge 42% on year to 2.25 mil mt

Thailand imported 2.25 million mt of coal comprising mainly bituminous, anthracite and other coals in October, up 42% year on year, according to customs data released Thursday. Of the total imports, bituminous coal accounted for 664,362 mt, edging up 0.3% year on year, the cargoes coming mainly from Indonesia (328,301 mt, up 4.3% year on year), followed by Australia (292,255 mt, up 0.1% from a year earlier), and Russia (42,427 mt, down 22.9% year on year).

Imports of other coals such as lignite and sub-bituminous rose 75.3% year on year to 1.57 million mt in October. Almost all the other coals were imported from Indonesia, 1.57 million mt, up 102.4% year on year. Thailand imported 20,707 mt of anthracite coal in the month, down 30.4% year on year, and mainly from Vietnam. During the first 10 months, Thailand imported 21.29 million mt of coal, up 13.8% year on year, comprising mainly bituminous coal (6.94 million mt, down 20.3% year on year). The imports in the period were worth \$1.39 billion, rising 10.3% from January-October last year. Indonesia and Australia remained key suppliers in the period.

Indian power utilities' october thermal coal imports up 27% on year

Indian power utilities imported around 6.61 million mt of thermal coal in October, up 27% year on year, according to latest data from India's Central Electricity Authority released Tuesday. Of the total, around 1.92 million mt was imported by 18 utilities for blending purposes, while 4.69 million mt was imported by eight utilities that run their thermal power stations on imported coal only. Adani Power's Mundra thermal power plant imported the highest volumes of thermal coal in October, at around 1.33 million mt, followed by Tata Power's Mundra ultra mega power plant at around 1.25 million mt and JSW Energy at 754,000 mt. As many as 35 utilities did not import any coal last month. During April-October, thermal coal imports stood at 33.95 million mt, up less than 1% year on year. Power utilities imported 56.41 million mt steam coal in fiscal 2017-18, down 13% year on year.

China's coastal coal freights continue to drop in week to tuesday

Freight costs for shipping coal from northern China's Qinhuangdao Port to the other Chinese ports of Zhangjiagang, Shanghai and Guangzhou in eastern and southern China continued to decline in the week to Tuesday, port operator Qinhuangdao Port said Tuesday. The freight rate from Qinhuangdao to Zhangjiagang in eastern China's Jiangsu province for 20,000-30,000 mt capacity vessels dropped Yuan 2.00/mt week on week to Yuan 37.70/mt (\$5.43/mt), Qinhuangdao Port said. The rate from Qinhuangdao to Shanghai in eastern China for vessels with a carrying capacity of 40,000-50,000 mt slipped Yuan 1.20/mt to Yuan 30.80/mt. The rate from Qinhuangdao to Guangzhou in southern China's Guangdong Province for 50,000-60,000 mt vessels fell Yuan 3.10/mt week on week to Yuan 39.50/mt. Relatively low coal consumption and high coal stocks at downstream coal-fired power plants have held down China's coastal coal freights market, the port operator said. Coal stocks at Qinhuangdao Port stood at 5.565 million mt on Tuesday, down from 5.645 million mt a week ago, port figures showed.

(Source: www.platts.com)

INTERNATIONAL SPOT DRY BULK FREIGHT ASSESSMENTS

Size	From	To	Freight rates	Change
Capesize (150.000 tons)	Australia	China	10.35	+0.75
	Queensland	Japan	11.90	+0.90
	New South Wales	South Korea	12.75	+0.90
Panamax (70.000 tons)	Richards Bay	India West	12.75	-0.05
	Kalimantan	India West	8.50	+0.15
	Richards Bay	India East	12.95	-0.05
	Kalimantan	India East	7.05	+0.15
	Australia	China	12.10	+0.55
	Australia	India	13.60	+0.55

(Source: Platts Coal Trader International – Date 27/11/2018)