



**PETROVIETNAM POWER CORPORATION**  
**PETROVIETNAM POWER COAL IMPORT AND SUPPLY COMPANY**  
**DAILY NEWS**

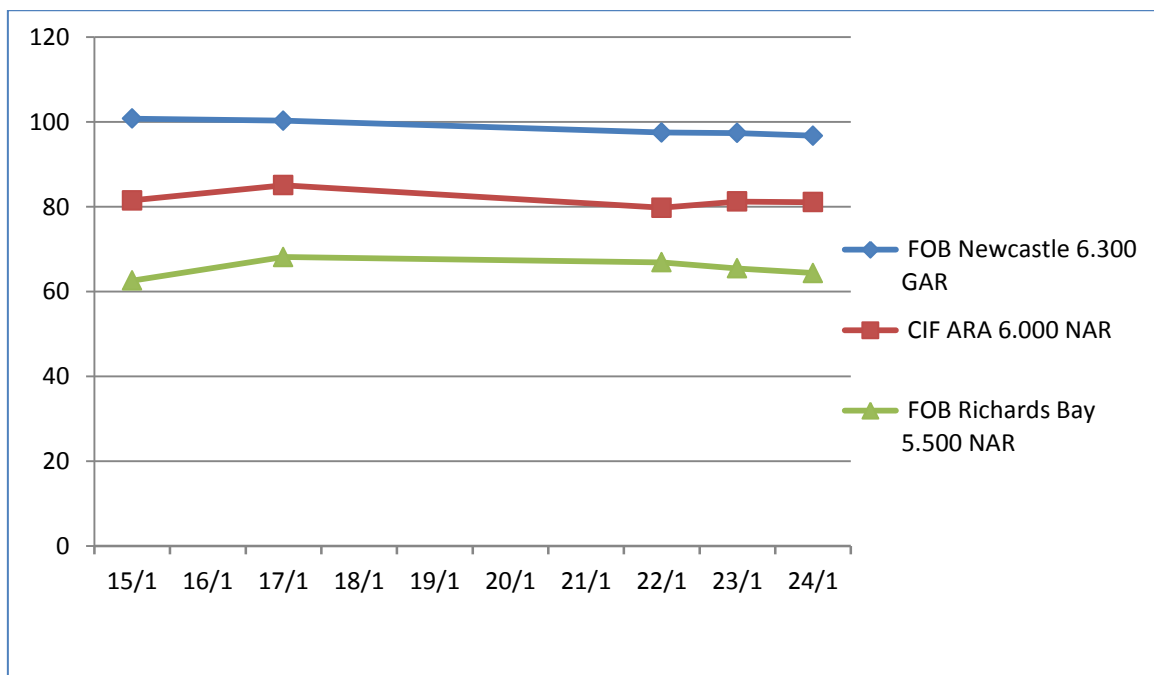
Date 30/01/2019

**INTERNATIONAL COAL PRICE ASSESSMENTS**

Daily prompt physical thermal coal assessments	Window 7 – 45 day	+/-	Window 90 - day	+/-
FOB Newcastle 6,300 GAR	96.75	-0.65	N/A	N/A
CIF ARA 6,000 NAR	81.10	-0.15	N/A	N/A
FOB Richards Bay 5,500 NAR	64.35	-1.10	N/A	N/A
FOB Kalimantan 5,900 GAR	N/A	N/A	70.30	+0.00
FOB Kalimantan 5,000 GAR	N/A	N/A	51.60	+0.00

China Coal Assessment	USD/tons	+/-	NDT/tons	+/-
PCC6 (CFR South China 3,800 NAR)	40.70	+0.20	275.41	+1.74
PCC7 (CFR South China 4,700 NAR)	58.10	+0.10	393.15	+1.22
PCC8 (CFR South China 5,500 NAR)	72.50	+0.00	490.60	+0.69

**DAILY PROMPT PHYSICAL THERMAL COAL ASSESSMENTS IN 2019**



*(Source: Platts Coal Trader International – Date 24/1/2019)*

## **NEWS**

### **South Chungcheong Governor Resists Gov't's Coal Power Plans**

South Chungcheong Province, which is home to around half of Korea's coal-fired power plants, is committed to phasing out the heavily polluting power source, even as the central government wants to hike coal power production to make up for its nuclear phaseout.

South Chungcheong Province Governor Yang Seung-jo, who is affiliated with the ruling Minjoo Party, told the Chosun Ilbo on Wednesday, "We need to halt steps to extend the lifespan of aging coal-fired plants" since that would worsen already alarming air pollution.

Boryeong, Dangjin, Seocheon and Taean in South Chungcheong Province are home to 30 out of Korea's 61 coal-fired power plants. Two plants in Boryeong are more than 30 years old and 10 others were built over two decades ago.

The governor believes the health of locals is at risk from the emission from these aging plants. "The amount of atmospheric pollution in the province is the highest in the country at 280,000 tons as of 2015," Yang said. Yang added that decades-old plants must be shut down and transformed into eco-friendly power plants.

According to Environment Ministry, South Chungcheong Province accounted for 24.1 percent of 361,459 tons of airborne pollutants emitted by 635 factories and power plants last year, the worst of any province. Thermal power plants in Boryeong, Dangjin and Taean emit 55,000 tons of airborne pollutants, accounting for more than 60 percent of total pollutant output in the province.

Environmental groups put together a feasibility study on extending the lifespan of four power plants in Dangjin and urged the government to stop the plans immediately.

The state-run Korea Development Institute claims refurbishing the plants could extend their lifespan by another 10 years to 2041. The cost of refurbishment is estimated at W1.51 trillion (US\$1=W1,130).

An environmental activist said, "The study concluded that the plant is operable until 2040 at 80 percent operation rate, but the government only intends to set the rate at 40 to 60 percent, which makes it completely unviable."

Yang also said he does not trust the study.

*(Source: [www.english.chosun.com](http://www.english.chosun.com).)*

### **RBCT coal exports decline**

Richards Bay Coal Terminal (RBCT) exported 73.47-million tonnes of coal in 2018, 4.1% less than in 2017.

The main export destination of the South African-mined coal was Asia at 81.6%. Europe was the recipient of 10.1% of the coal, Africa 8% and South America 0.3%.

India was the biggest single country recipient at 35.29-million tonnes followed by Pakistan at 9.37-million tonnes and then South Korea at 6.73-million tonnes. Netherlands was the export destination for 3.14-million tonnes and Spain for 1.38-million tonnes.

Of the African countries, Egypt was top with 1.33-million tonnes.

RBCT has a 2019 export target of 77-million tonnes, which will take it beyond the record 76.47-million tonnes exported in 2017.

RBCT CEO Alan Waller outlined the success of Africa's largest coal terminal to move coal in a safe, cost-effective and efficient manner.

The terminal received 27 trains a day against a capacity to receive 32 trains a day as part of its partnership with Transnet Freight Rail, which Waller described as one that "works very well".

Twenty-four fewer vessels were loaded in 2018, 883 compared with 907 in 2017, and three-million fewer tonnes exported.

Weather, which cut 36 days out of the schedule following the 38 of 2017, has become an ongoing challenge that RBCT has not allowed to get in the way of its export commitments.

Marine services are being stepped up with the introduction of a third tug boat and helicopter assistance. The equipment replacement programme has been highly successful, with the first phase's brand new stacker reclaimers and shiploaders achieving improved turnaround times for coal exporters.

The two new stacker reclaimers took over from 42-year-old machines and the two new shiploaders are operating at 98% to 99% efficiency.

The two rail-mounted stacker reclaimers operate at a rate of 6 000 t/h and the two rail-mounted shiploaders at a rate of 10 000 t/h.

The stackers allocate the coal to 98 stockpiles and reclaimers extract 42 different grades of coal from the stockpiles. The shiploaders then load the coal on to waiting vessels.

The terminal has a capacity to export 91-million tonnes of coal a year. The 2.2 km, six-berth quay has four ship loaders and a stockyard that can hold 8.2-million tonnes of coal.

RBCT is owned by Anglo Operations, ARM Coal, South32Coal, Exxaro, Glencore Operations, Kangra Coal, Koornfontein Mines, Optimum Coal Terminal, Sasol Mining, South Dunes Coal Terminal, South African Coal Mine Holdings, Tumelo Coal Mines and Umcebo Mining, with Optimum Coal and Koornfontein in business rescue.

(Source:www.miningweekly.com)

## **INTERNATIONAL SPOT DRY BULK FREIGHT ASSESSMENTS**

<i>Unit: USD/ton</i>				
<b>Size</b>	<b>From</b>	<b>To</b>	<b>Freight rates</b>	<b>Change</b>
<b>Capesize</b> (150.000 tons)	Australia	China	7.40	-0.15
	Queensland	Japan	8.40	-0.15
	New South Wales	South Korea	9.25	-0.15
<b>Panamax</b> (70.000 tons)	Richards Bay	India West	10.85	-0.15
	Kalimantan	India West	6.90	-0.30
	Richards Bay	India East	11.00	-0.15
	Kalimantan	India East	5.65	-0.25
	Australia	China	9.50	-0.35
	Australia	India	10.50	-0.70

(Source: Platts Coal Trader International – Date 24/1/2019)