



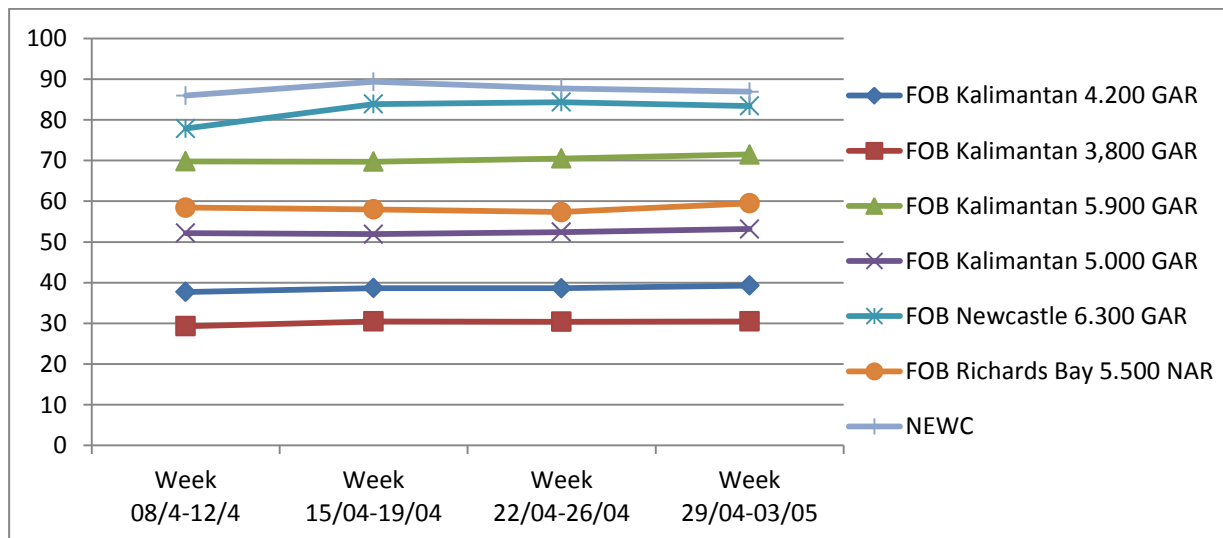
**PETROVIETNAM POWER CORPORATION**  
**PETROVIETNAM POWER COAL IMPORT AND SUPPLY COMPANY**  
**WEEKLY NEWS – FIRST WEEK OF**  
**MAY**  
 (From 29/4 – 03/05)

**I. COAL MARKET ANALYSIS**

**1. INTERNATIONAL COAL PRICE ASSESSMENTS**

*Unit: USD/ton*

Price index	Week 08/04-12/04	Week 15/04-19/04	Week 22/04-26/04	Week 29/04-03/05
FOB Kalimantan 4.200 GAR	37.7	38.65	38.62	39.3
FOB Kalimantan 3.800 GAR	29.3	30.50	30.41	30.475
FOB Kalimantan 5.900 GAR	69.80	69.70	70.5	71.5
FOB Kalimantan 5.000 GAR	52.20	51.90	52.42	53.175
FOB Newcastle 6,300 GAR	77.85	83.88	84.33	83.41
FOB Richards Bay 5,500 NAR	58.45	58.00	57.33	59.49
NEWC (FOB Newcastle 6000 NAR)	85.93	89.34	87.72	86.91



**Chart 1: Average coal price 1<sup>st</sup> week of May (2019)**

*(Source: Platts Coal Trader International)*

## 2. INTERNATIONAL SPOT DRY BULK FREIGHT ASSESSMENTS

Unit: USD/ton

	Week 1 <sup>st</sup> – May	29/04	30/04	01/05	02/05	03/05
<b>Capesize (150,000 tons)</b>						
1	Australia – China	8.00	8.90	N/A	8.80	8.10
2	Queensland – Japan	9.05	10.05	N/A	9.95	9.05
3	New South Wales – South Korea	9.90	10.90	N/A	10.80	9.90
<b>Panamax (70,000 tons)</b>						
1	Richards Bay - India West	11.80	11.90	N/A	12.25	12.25
2	Kalimantan - India West	8	8	N/A	8	8
3	Richards Bay - India East	11.95	12.05	N/A	12.40	12.40
4	Kalimantan - India East	6.65	6.65	N/A	6.65	6.65
5	Australia - China	11.10	11.20	N/A	11.00	11.15
6	Australia - India	12.25	12.50	N/A	12.25	12.55

(Source: Platts Coal Trader International)

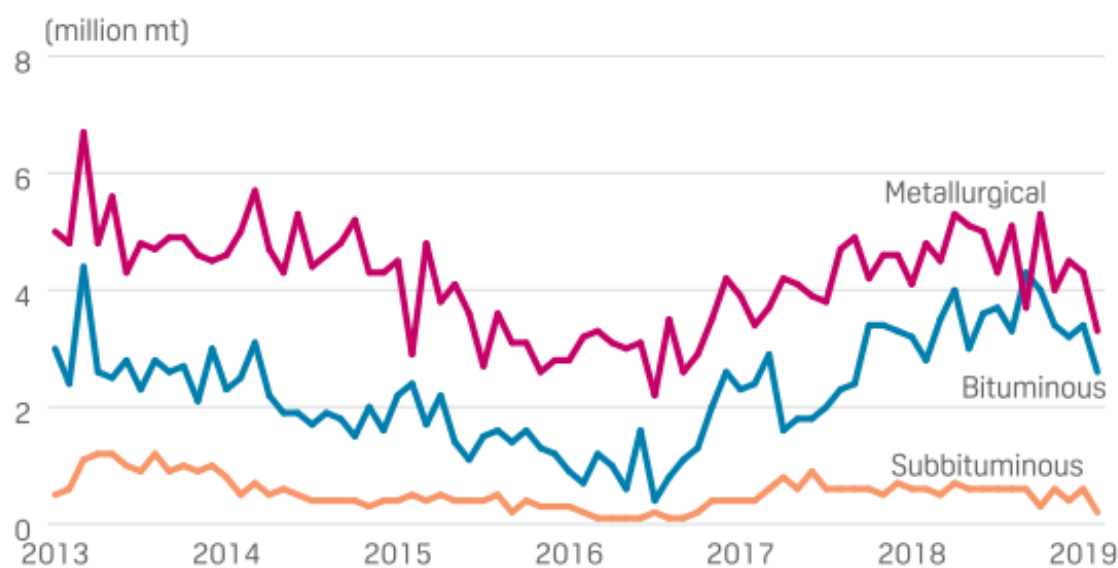
## II. NEW

### February Us coal exports drop 27.8% on month on weather

US coal exports totaled about 6.1 million mt in February, down 27.8% from January and down 25.7% year on year, according to US Census data released Wednesday. While January saw export highs across the board, flooding and other weather issues led to the fall in February shipments. The number of vessels departing US coasts dropped about 38% in February compared with January, according to cFlow, S&P Global Platts' trade flow software. Despite February seeing the largest month-on-month drop since July 2016, exports in the first two months of the year rose 14.7% compared with the same period last year.

India was the top destination in February, with over 1.1 million mt in imports from the US, followed by the Netherlands with just under 1.1 million mt, and Japan with 560,423 mt imported. In February 2018, the top importers were India, with almost 1.1 million mt, China, with 816,229 mt, and Brazil, with 723,791 mt.

### MONTHLY US COAL EXPORTS



Source: US Census

Following January's export high, US bituminous coal exports totaled 2.6 million mt in February, down 23.9% from the previous month and down 6.3% compared with the year-ago month. However, compared with the first two months of 2018, exports in January and February rose 34.1%. The top importers of US bituminous coal in February were India, with 842,214 mt compared with 572,368 mt last year; the Netherlands, with 535,761 mt compared with 226,003 mt in the same month in 2018; and Japan, with 330,756 mt compared with 237,244 mt in the year-ago month.

US subbituminous exports totaled 225,535 mt in February, down 62.9% from January and down 59% from the year-ago month. Additionally, exports of this coal type fell 11.8% in the first two months compared with the same period last year. Mexico, Morocco and South Korea were the top importers in February, with 169,696 mt, 40,000 mt and 15,015 mt, respectively. In February 2018, Morocco did not import any US subbituminous coal, while South Korea and Mexico imported 224,782 mt and 162,916 mt, respectively.

### **Anglo's Q1 thermal coal exports total 6.6 million mt, down 2%**

Anglo-American's Q1 thermal coal exports totaled 6.6 million mt, down 2% from the year-ago quarter as the company's stronger production of export coal from South African mines largely offset a steep drop in production from Colombia, the company said Thursday. The global miner reported "solid operational performance" across its South African mines, with exported thermal coal production up 2% to 4.4 million mt. Anglo's thermal coal production for domestic consumption dropped 54% to 2.3 million mt during the quarter following completion of the sale of its Eskom-tied operations.

Stronger South African production for exports helped offset a drop in production at the Cerrejon mine in Colombia where Anglo owns a 33% stake. Anglo cited "dust management restrictions" for the 10% drop in exports from the mine, which totalled 2.2 million mt. Anglo's metallurgical coal production totaled 4.2 million mt, down 25% from the year-ago quarter, due to two longwall moves during the quarter. The company only had one longwall move in Q1 2018, it said. Full-year guidance for 2019 remained unchanged for both met coal and export thermal coal at 22 million-24 million mt and 26 million – 28 million mt, respectively, the company said.

### **Indian power utilities' 2018-2019 thermal coal imports up 9.3% on firm demand**

Indian power utilities imported 61.65 million mt of thermal coal in fiscal year 2018-2019 (April-March), up 9.3% year on year, according to the latest data by India's Central Electricity Authority (CEA) released Wednesday. Even though the domestic production is rising, it is unable to keep pace with the strong demand for electricity, which is resulting in the rise in coal imports, sources said. Logistics-related issues hindering the timely transportation of coal, and restrictions in the usage of petroleum coke as fuel are some of the other factors responsible for rising coal imports.

Of the total thermal coal imports, 21.37 million mt were imported by 33 utilities in the 12-month period for blending with domestic coal, while 40.28 million mt was imported by nine utilities, which burn only imported coal in their power plants, the data showed. Among the utilities, Adani Power imported the highest quantity of thermal coal in the fiscal year at 13.36 million mt, followed by Tata Power's Mundra ultra mega power plant at 11.07 million mt and JSW Energy at 4.74 million mt. Meanwhile, 21 utilities did not import any coal during the period. On a monthly basis, March coal imports were at 6.34 million mt, up 44% from the year-ago period.

*(Source: S&P Global Platts)*